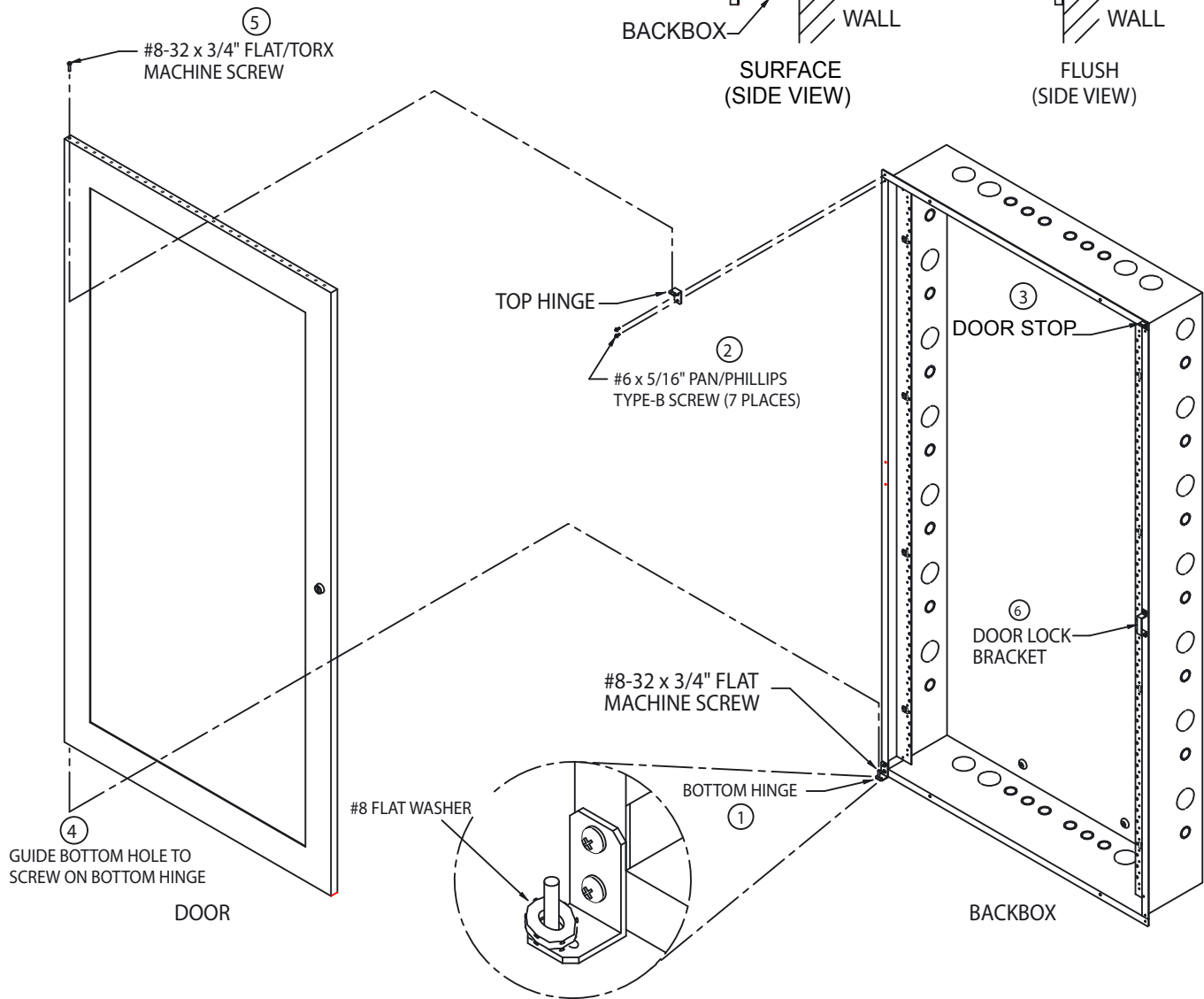
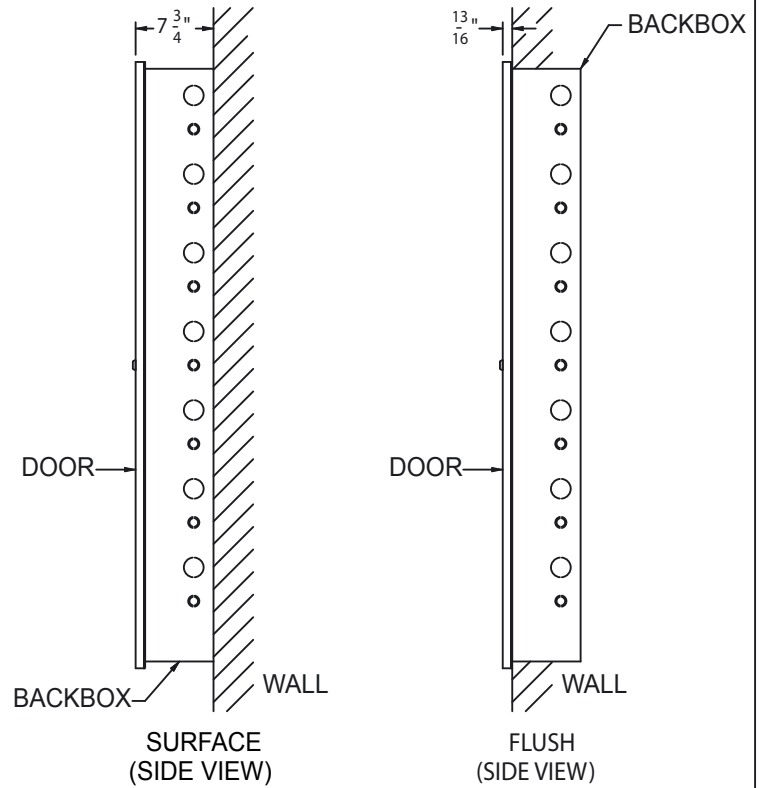


**NOTES**

1. MATERIAL: 14 GA (0.075") COLD ROLLED STEEL
2. FINISH: PAINTED
3. SEE LT-643 FOR BACKBOX (BB-5014) DIMENSIONS.
4. HINGES CAN BE INSTALLED SO THAT DOOR CAN BE OPENED TO THE LEFT OR TO THE RIGHT.



**Lobby Control Center Steel Door (Model: DOX-5014M)  
Installation Instruction and Dimensions**